

Anti-PAX8 (Renal Cell Marker) Antibody
Mouse Monoclonal Antibody
Catalog # AH13584**Specification**

Anti-PAX8 (Renal Cell Marker) Antibody - Product Information

Application	WB, IHC-P, IF, FC
Primary Accession	Q06710
Other Accession	469728
Reactivity	Human
Host	Mouse
Clonality	Monoclonal
Isotype	Mouse / IgG2a
Calculated MW	48218

Anti-PAX8 (Renal Cell Marker) Antibody - Additional Information**Gene ID** 7849**Other Names**

Paired box 8; Paired box gene 8; paired box homeotic gene 8; Paired box protein Pax-8; Paired domain gene 8; PAX8

Application Note

WB~1:1000
IHC-P~N/A
IF~1:50~200
FC~1:10~50

Format

200ug/ml of Ab purified from Bioreactor Concentrate by Protein A/G. Prepared in 10mM PBS with 0.05% BSA & 0.05% azide. Also available WITHOUT BSA & azide at 1.0mg/ml.

Storage

Store at 2 to 8°C. Antibody is stable for 24 months.

Precautions

Anti-PAX8 (Renal Cell Marker) Antibody is for research use only and not for use in diagnostic or therapeutic procedures.

Anti-PAX8 (Renal Cell Marker) Antibody - Protein Information**Name** PAX8**Function**

Transcription factor for the thyroid-specific expression of the genes exclusively expressed in the thyroid cell type, maintaining the functional differentiation of such cells.

Cellular Location

Nucleus.

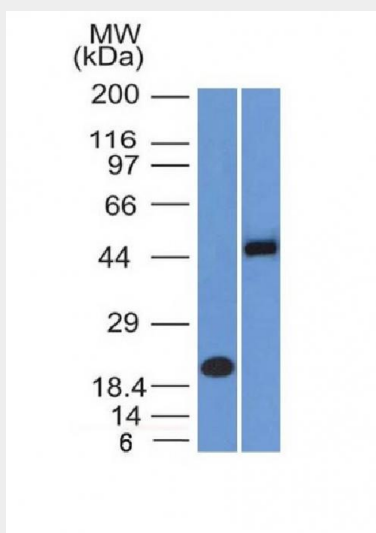
Tissue Location

Expressed in the excretory system, thyroid gland and Wilms tumors

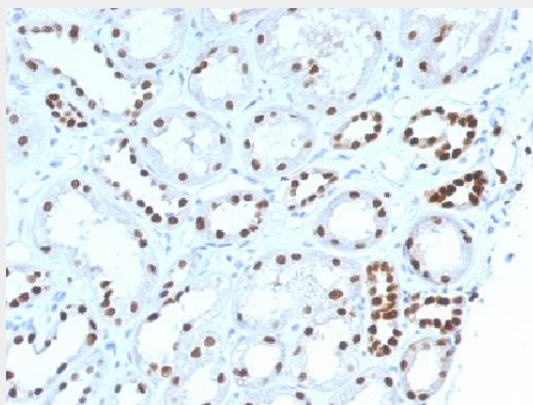
Anti-PAX8 (Renal Cell Marker) Antibody - Protocols

Provided below are standard protocols that you may find useful for product applications.

- [Western Blot](#)
- [Blocking Peptides](#)
- [Dot Blot](#)
- [Immunohistochemistry](#)
- [Immunofluorescence](#)
- [Immunoprecipitation](#)
- [Flow Cytometry](#)
- [Cell Culture](#)

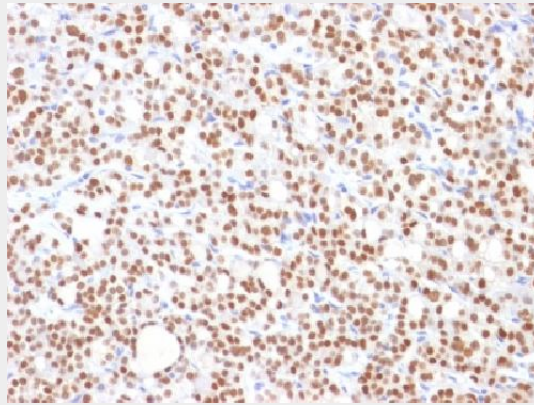
Anti-PAX8 (Renal Cell Marker) Antibody - Images

Western Blot Analysis (A) Recombinant Protein (B) Raji Cell Lysate Using PAX8 Monoclonal Antibody (PAX8/1492).

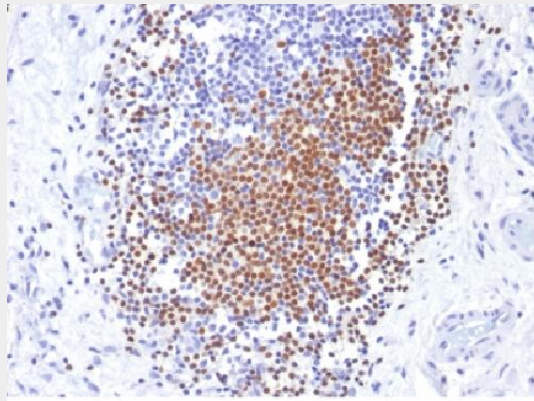


Formalin-fixed, paraffin-embedded human Renal Cell Carcinoma stained with PAX8 Monoclonal

Antibody (PAX8/1492).



Formalin-fixed, paraffin-embedded human Thyroid Carcinoma stained with PAX8 Monoclonal Antibody (PAX8/1492).



Formalin-fixed, paraffin-embedded human Urothelial Carcinoma stained with PAX8 Monoclonal Antibody (PAX8/1492).

Anti-PAX8 (Renal Cell Marker) Antibody - Background

Recognizes a protein of 62kDa, identified as PAX8. It is a member of the paired box (PAX) family of transcription factors. This nuclear protein is involved in thyroid follicular cell development and expression of thyroid-specific genes. Mutations in this gene have been associated with thyroid dysgenesis, thyroid follicular carcinomas, and atypical thyroid adenomas. PAX-8 is expressed in the thyroid (and associated carcinomas), non-ciliated mucosal cells of the fallopian tubes, and simple ovarian inclusion cysts, but not normal ovarian surface epithelial cells. PAX-8 is expressed in a high percentage of ovarian serous, endometrioid, and clear cell carcinomas, but only rarely in primary ovarian mucinous adenocarcinomas. PAX-8 expression is reported in renal tubules as well as renal cell carcinoma, nephroblastoma, and seminoma. PAX-8 antibody may be used as an additional immunohistochemical marker for renal epithelial tumors.